

SMALL PARTS & SLC TRANSPORT MAX. 100 KG

MiR

INCREASING EFFICIENCY WITH DRIVERLESS INTRALOGISTICS THE AUTONOMOUS MOBILE SOLUTION IN TRADE, CRAFT & INDUSTRY

With the MiR100 driverless Mobile Industrial Robots transport system, which is both efficient and user-friendly, you can automate the transport of small loads weighing up to 100 kg and make better use of employee resources.

This does not only make your intralogistics autonomous; above all, it makes them economical, flexible and safe. Without any adjustments on your premises, the MiR100 navigates using 3D camera technology from RealSense, SICK safety laser scanners and ultrasonic sensors, avoids stationary or moving obstacles, and comes to a stop in time. Thanks to its sophisticated technology, it can be used in dynamic environments to collaborate with humans. In the process, Mobile Industrial Robots quickly earn you returns on your investment; on average, the payback period is less than one year.

Set up your driverless MiR100 with custom-designed and exchangeable superstructures and adjust the autonomous mobile robot precisely to its intended use. Use special add-on modules from the extensive MiRGo accessories program on the convertible loading area of the platform as needed. Flexibly automating internal transports at your site has never been easier.

Talk to us about customized options for your company now.

TYPICAL SECTORS & INDUSTRIES FOR THE USE OF THE MIR 100

- Hospitals
- Laboratories & Research Facilities
- Medical Technology • Pharmaceuticals
- Automotive • Logistics • Electronics • Consumer Goods



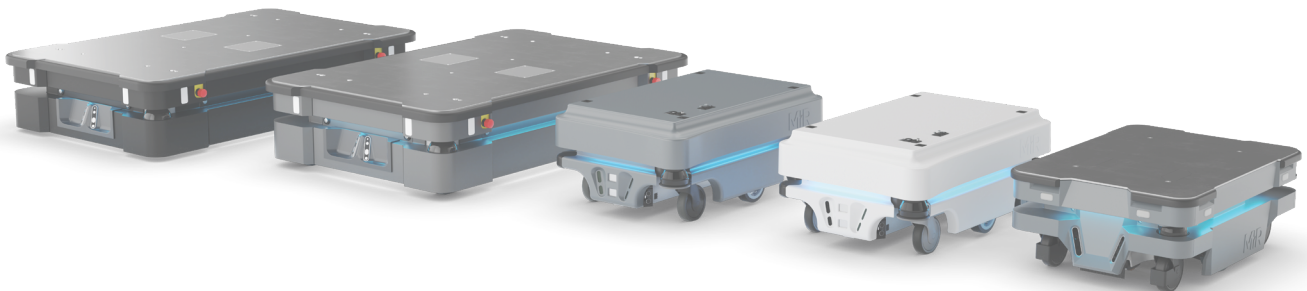
FEATURES, FACTS & BENEFITS YOUR PRODUCT ADVANTAGES

- **Compact & agile**
suitable for most environments, navigates in highly dynamic settings, tight spaces, over ramps, in elevators
- **Collaborative & safe**
for autonomous transport in interaction with people
- **Contactless intralogistics**
across departments & the entire site
- **Flexible use**
does not require infrastructural or process adjustments, WIFI communication
- **Easy handling**
intuitive programmability & automatic loading processes
- **Full transparency**
user-oriented real-time insights into missions
- **Full system compatibility**
for integration with your ERP/GMS
- **Fleet ready**
for coordinated robot deployment

TECHNICAL SPECIFICATIONS MIR100 *

Dimensions (LxWxH):	890 x 580 x 352 mm	Max. load capacity:	100 kg
Ground clearance:	50 mm	Max. slope:	5 %
Empty weight:	70 kg	Loading area/load:	890 x 580 mm (LxW) for custom. setup; esp. suitable for crates, boxes, SLC, shelves, conveyors, Cobot installations and more
Position accuracy:	+/- 10 mm (to docking mark)	Protection class:	IP20
Speed:	max. 5,4 km/h (1,5 m/s)	Safety:	CE conformity
Communication:	WIFI (more specs: see online)	Further certifications:	see online; e. g. clean room
Battery & Power:	Li-NMC, 24V, 40Ahh	Safety system:	SICK safety laser scanner S300 (front/rear) for optical 360° protection
Performance duration:	10 hrs. (depending on application)		3D camera Intel RealSense for detection of objects in the travel path (50-1,800 mm height above floor)
Charging time:	120 minutes for 0-80 % automatic charging		4x ultrasonic sensors
Recommended track widths:	Passage min. 1,000 mm / door min. 800 mm		Acoustic & visual signaling
Floor:	Smooth / dry (small water puddles)		
Uneven floor:	< 20 mm		
Temperature range:	5 to 40 °C		
Rel. Humidity:	10 to 95 % (non-condensing)		

* Specifications as provided by the manufacturer at the time of printing; subject to change & errors excepted.



Find a wide range of accessories and set modules for your individual MiR100 online.

OUR COMPREHENSIVE SERVICES AS AMR INTEGRATOR



Test Installation



Commissioning



Fleet Management



Maintenance & Service



Safety & Consulting



Education & Training

GET TO KNOW US

As the largest manufacturer-independent integrator of automated guided vehicles in Europe, we deliver the perfect solution for the automation of your intralogistics tasks in industry, service, trade & crafts within the HAHN Robotics Network.

Get your company's logistics future-ready with us!



by **HAHN ROBOTICS** - part of the **HAHNGROUP**

next to you at the **HAHN ROBOTICS** locations