

SMALL PARTS & SLC TRANSPORT MAX. 250 KG

MiR

INCREASING EFFICIENCY WITH DRIVERLESS INTRALOGISTICS THE AUTONOMOUS MOBILE SOLUTION IN TRADE, CRAFT & INDUSTRY

With the MiR250 driverless Mobile Industrial Robots transport system, which is both efficient and user-friendly, you can automate the transport of small and moderate loads weighing up to 250 kg and make better use of employee resources.

This does not only make your intralogistics autonomous; above all, it makes them economical, flexible and safe. Without any adjustments on your premises, the MiR250 navigates using 3D camera technology from RealSense, SICK safety laser scanners and proximity sensors, avoids stationary or moving obstacles, and comes to a stop in time. Thanks to its sophisticated technology, it can be used in dynamic environments to collaborate with humans. In the process, Mobile Industrial Robots quickly earn you returns on your investment; on average, the payback period is less than one year.

Set up your driverless MiR250 with custom-designed and exchangeable superstructures and adjust the autonomous mobile robot precisely to its intended use. Use special add-on modules from the extensive MiRGo accessories program on the convertible loading area of the platform as needed. Flexibly automating internal transports at your site has never been easier.

Talk to us about customized options for your company now.

TYPICAL SECTORS & INDUSTRIES FOR THE USE OF THE MiR250

- Hospitals
- Laboratories & Research Facilities
- Medical Technology • Pharmaceuticals
- Automotive • Logistics • Electronics • Consumer Goods



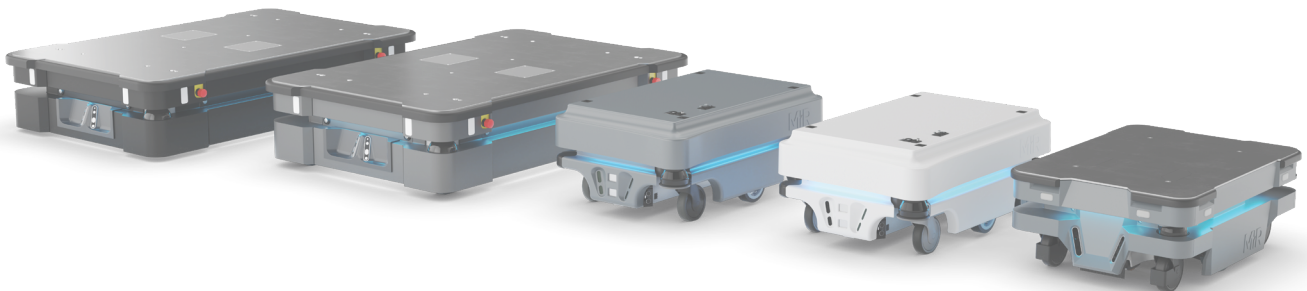
FEATURES, FACTS & BENEFITS YOUR PRODUCT ADVANTAGES

- **Compact & agile**
suitable for most environments, navigates in highly dynamic settings, tight spaces, over ramps, in elevators
- **Collaborative & safe**
for autonomous transport in interaction with people
- **Contactless intralogistics**
across departments & the entire site
- **Flexible use**
does not require infrastructural or process adjustments, WIFI communication
- **Easy handling**
intuitive programmability & automatic loading processes
- **Full transparency**
user-oriented real-time insights into missions
- **Full system compatibility**
for integration with your ERP/GMS
- **Fleet ready**
for coordinated robot deployment

TECHNICAL SPECIFICATIONS MIR250 *

Dimensions (LxWxH):	800 x 580 x 300 mm	Max. load capacity:	250 kg
Ground clearance:	25 - 28 mm	Loading area/load:	800 x 580 mm (LxW) for custom. setup; esp. suitable for crates, boxes, SLC, shelves, conveyors, Cobot installations and more
Empty weight:	83 kg	Protection class:	IP21
Position accuracy:	+/- 5 mm (angle +/-1°)	Safety:	CE conformity
Speed:	max. 7.2 km/h (2.0 m/s)	Further certifications:	see online; e. g. clean room
Communication:	WIFI (more specs: see online)	Safety system:	SICK safety laser scanner (front/rear) for optical 360° protection
Battery & Power:	Li-NMC, 48V, 36Ah		2x Intel RealSense D435 3D camera for detection of objects in the travel path up to a height of 1,800 mm at a distance of 1,200 mm, 114° horizontal view
Performance duration:	13 hrs. (depending on application)		8x Proximity sensors
Charging time:	60 minutes for 0-80 % automatic charging		Acoustic & visual signaling
Recommended track widths:	Passage min. 1,400 mm / door min. 800 mm		
Floor:	Smooth / dry (small water puddles)		
Uneven floor:	< 20 mm		
Temperature range:	5 to 40 °C		
Rel. Humidity:	10 to 95 % (non-condensing)		

* Specifications as provided by the manufacturer at the time of printing; subject to change & errors excepted.



Find a wide range of accessories and set modules for your individual MiR100 online.

OUR COMPREHENSIVE SERVICES AS AMR INTEGRATOR



Test Installation



Commissioning



Fleet Management



Maintenance & Service



Safety & Consulting



Education & Training



GET TO KNOW US

As the largest manufacturer-independent integrator of automated guided vehicles in Europe, we deliver the perfect solution for the automation of your intralogistics tasks in industry, service, trade & crafts within the HAHN Robotics Network.

Get your company's logistics future-ready with us!

MOBILE ROBOTS 

by **HAHN ROBOTICS** - part of the **HAHNGROUP**

next to you at the **HAHN ROBOTICS** locations